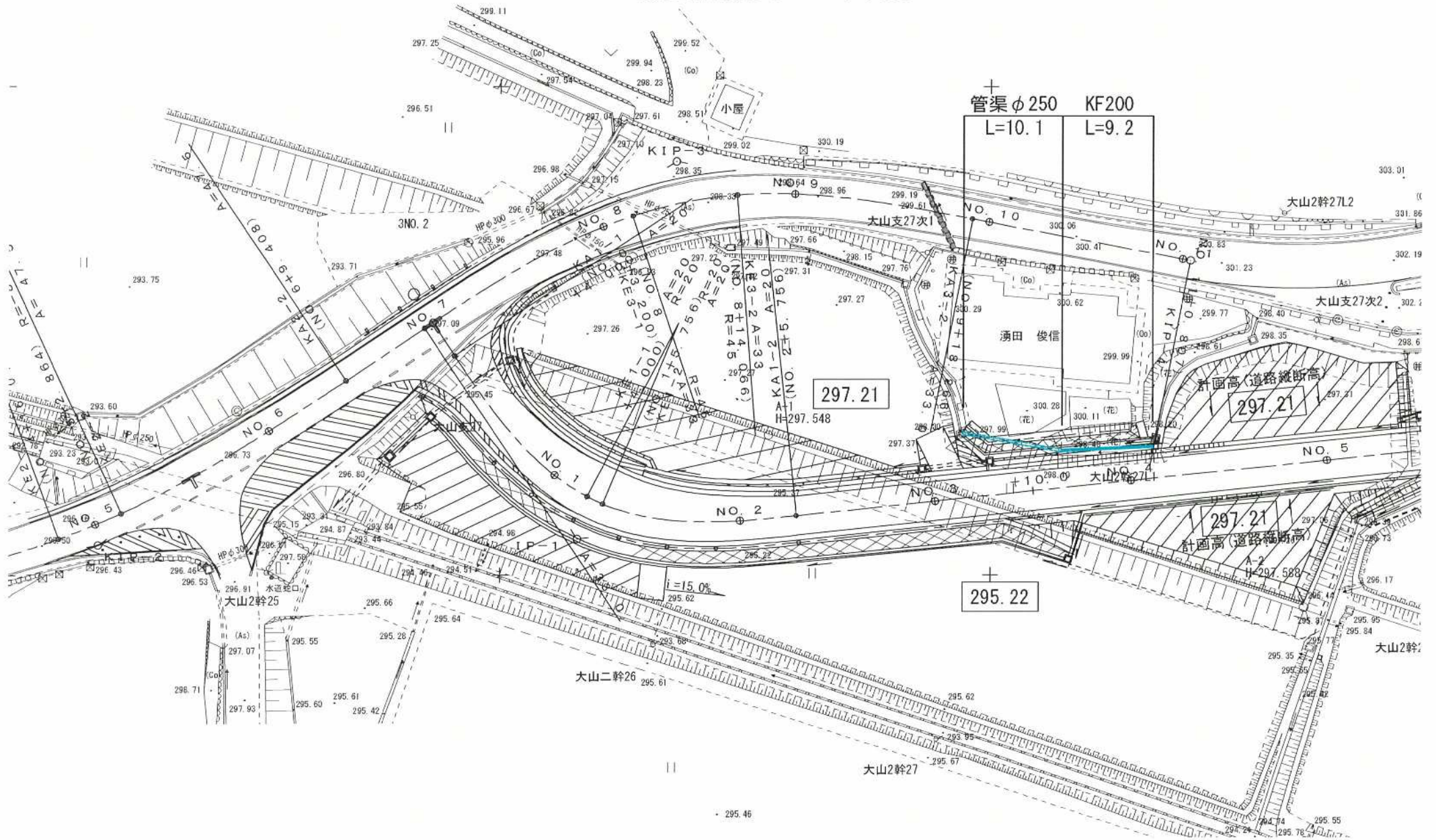


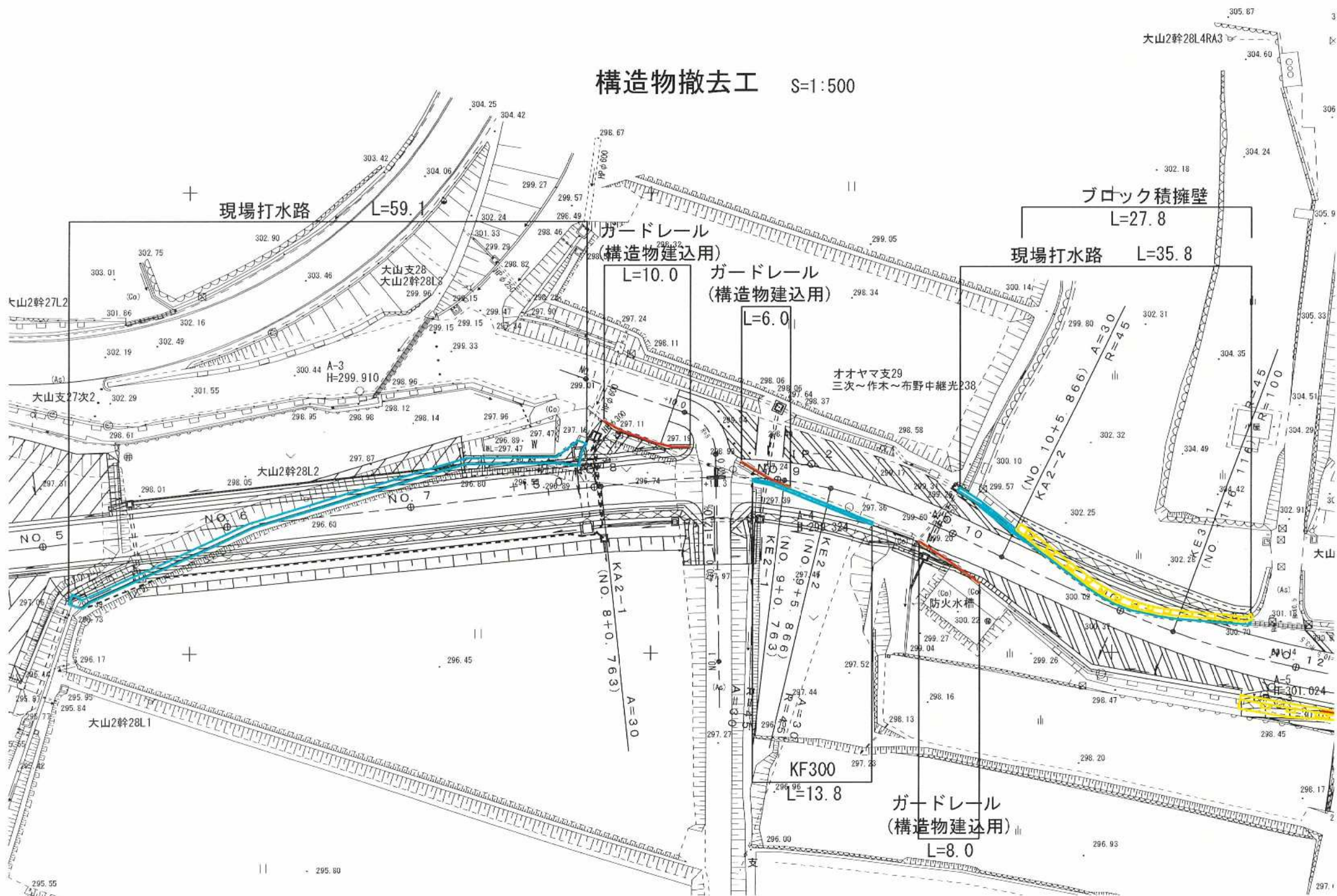
## 構造物撤去工

S=1 : 500





S=1 : 500







S=1:500

 $L = 6.1$ 

111

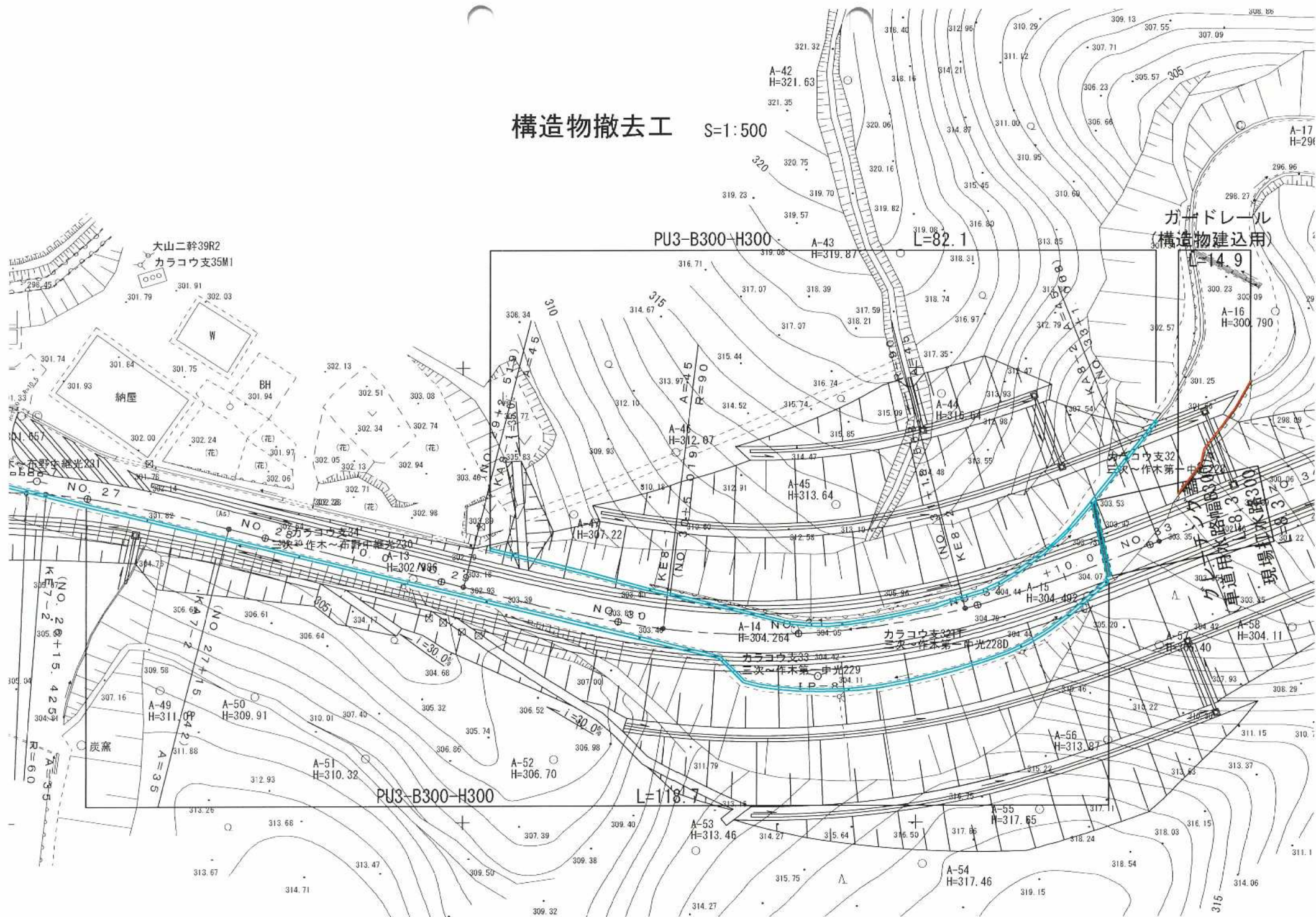
$$L \neq 30.1$$
 $L=12.6$ 
$$L = 10.0$$

L-15

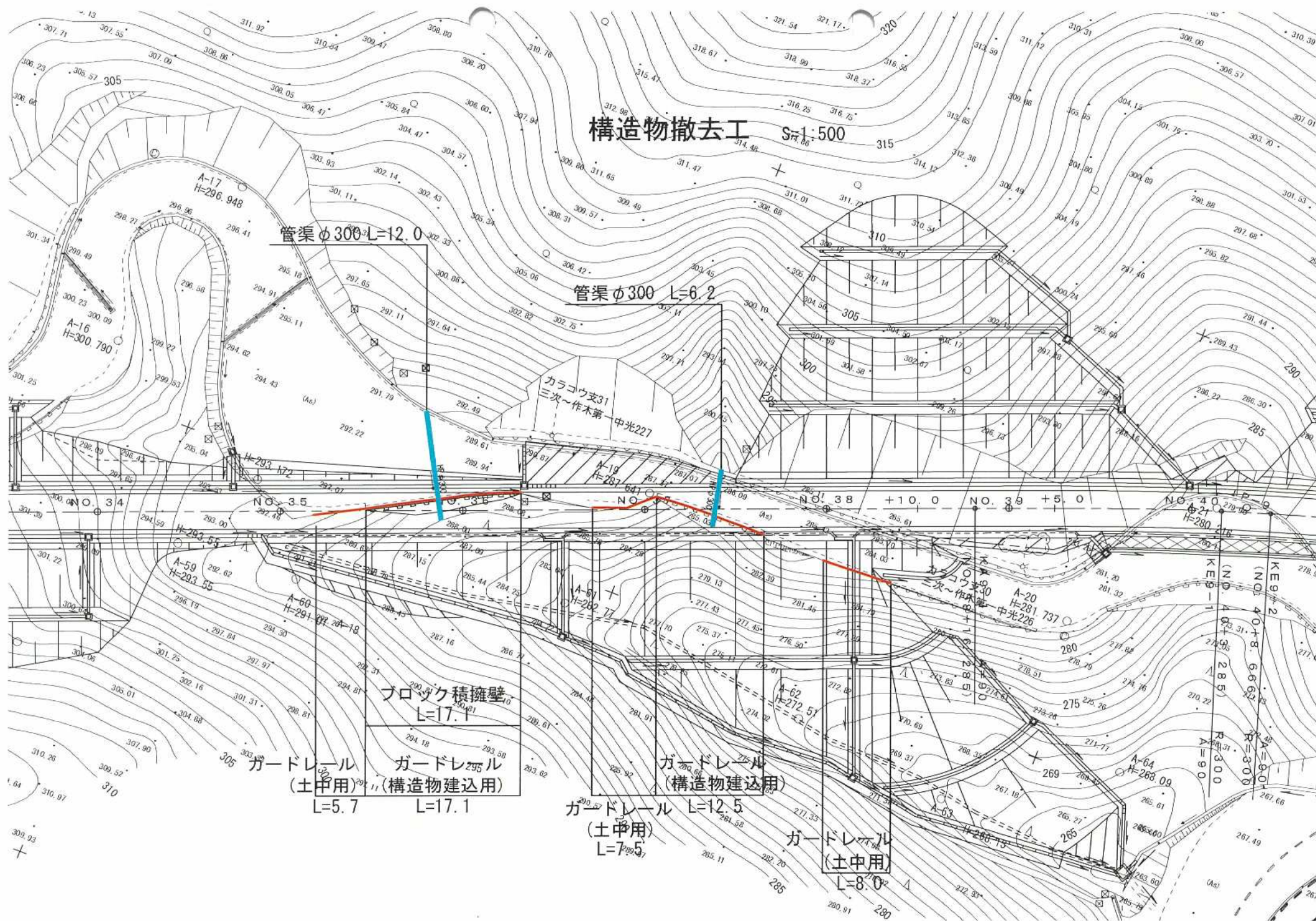
 $L = 12.8$ 
$$L=128$$



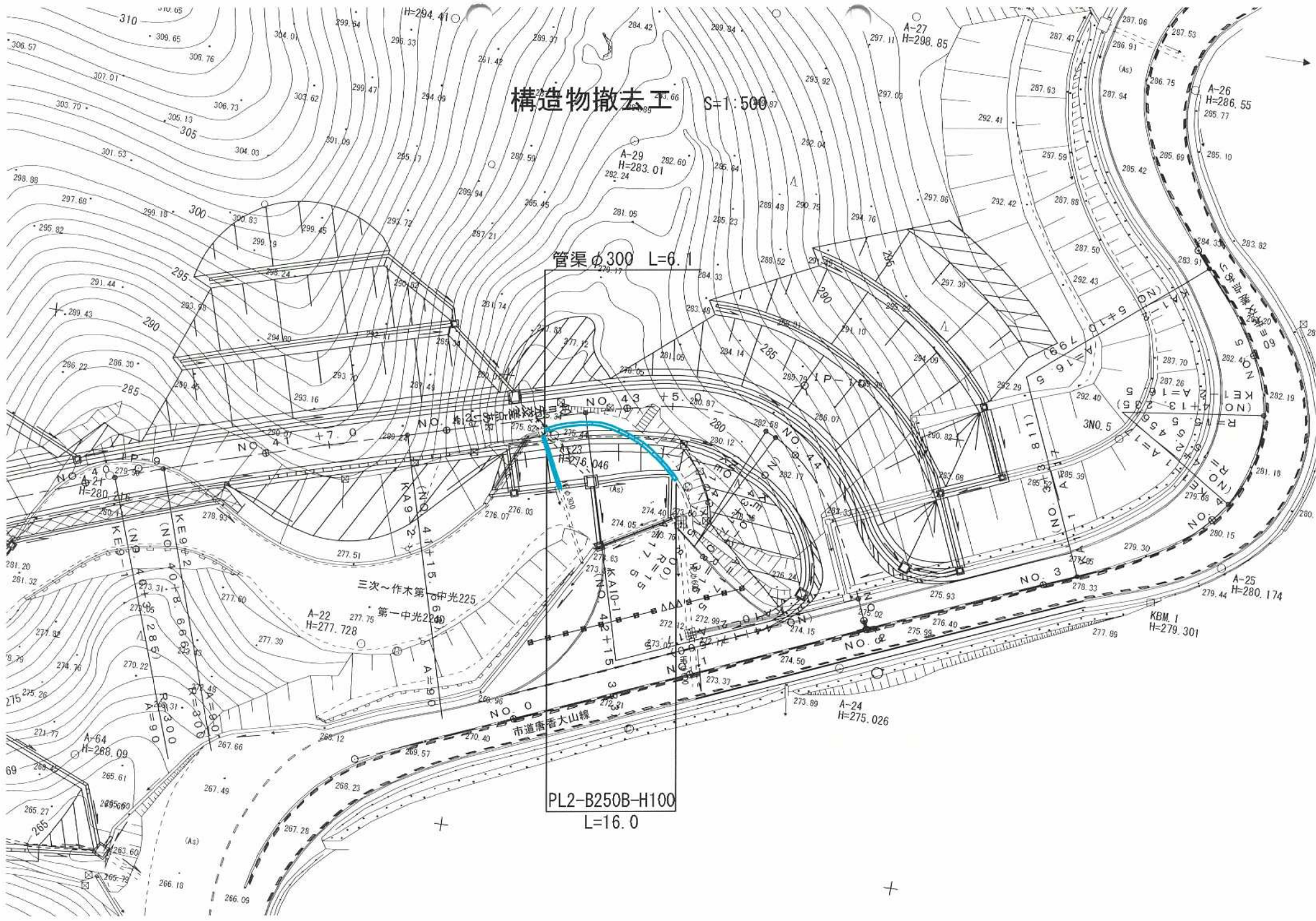
構造物撤去工 S=1:500











構造物撤去工

S=1:500

管渠φ300 L=6.1

PL2-B250B-H100  
L=16.0

三次～作木第  
第一中光2200

市道唐香大山線

A-24  
H=275.026

KBM. 1  
H=279.301

A-25  
H=280.174

NO. 5  
H=280.174

NO. 4  
H=280.174

NO. 3  
H=280.174

NO. 2  
H=280.174

NO. 1  
H=280.174

NO. 0  
H=280.174

A-27  
H=298.85

H=294.41

A-29  
H=283.01

A-22  
H=277.728

A-64  
H=268.09

A-63  
H=265.60

A-26  
H=286.55

A-25  
H=280.174

A-24  
H=275.026

A-23  
H=272.992

A-22  
H=270.960

A-21  
H=268.928

A-20  
H=266.896

A-19  
H=264.864

A-18  
H=262.832

A-17  
H=260.800

A-16  
H=258.768

A-15  
H=256.736